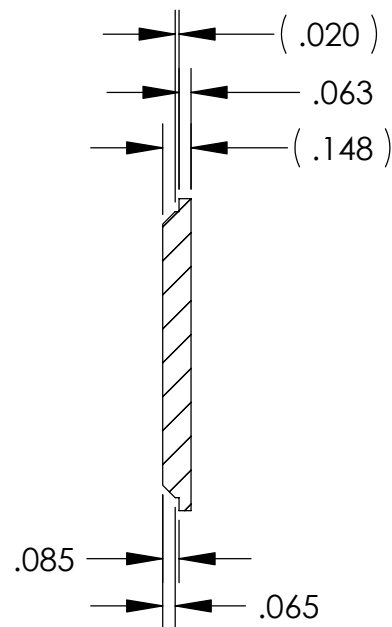
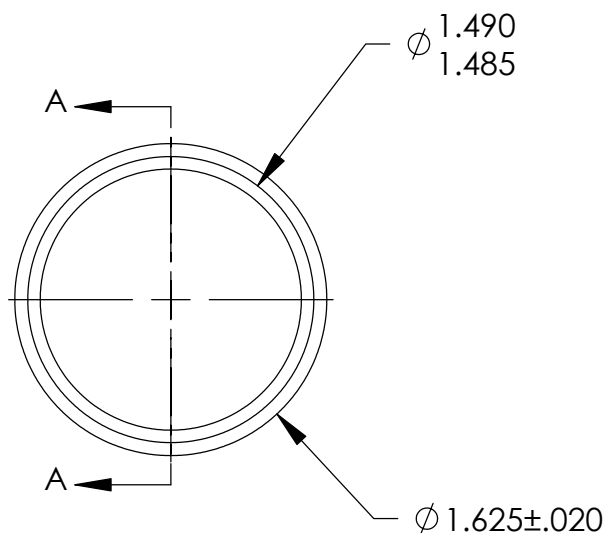
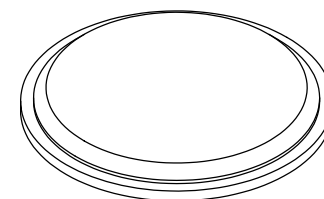


REV	DESCRIPTION	DATE
B	Diameter was 3.00"	8/10/2003
C	Changed to 3/16" plate	10/13/2003
D	Reduced thickness from 3/16"	4/27/2004



SECTION A-A



NOTES:

1. DIAMETER TO FIT DRAIN HOLES IN P/N -078, -079 & -080 (QTY 3 EACH).

UNLESS OTHERWISE SPECIFIED:		<div>High Precision Devices</div> <div>1668 Valtec Lane, Suite C, Boulder, Colorado 80301 Phone: (303) 447-2558 Fax: (303) 447-2548 Web Site: www.hpd-online.com</div>				
DIMENSIONS ARE IN INCHES DECIMAL TOLERANCES: .X ±.030 .XX ±.015 .XXX ±.005						
ANGULAR TOL: ± 1° SURFACE ROUGHNESS: 63/√		TITLE: <div>p02101-035 disk, drain</div>				
INTERNAL AND EXTERNAL SURFACE INTERSECTIONS SHALL BE UNIFORMLY FINISHED WITH CHAMFER .005/.010 X 45° OR RADIUS .005/.010. CHAMFER ALL THREADED HOLES 110° OF MAJOR DIAMETER X 45°		CONFIGURATION: <div>00-Default</div>				
MATERIAL:	3/16" 3003 Alum.	SIZE	QTY PER ASSM: 9	SCALE: 1:1	SHEET 1 OF 1	REV
FINISH:	NONE	A	DATE: 5/17/2004	DRAWN BY: C. Danaher		D